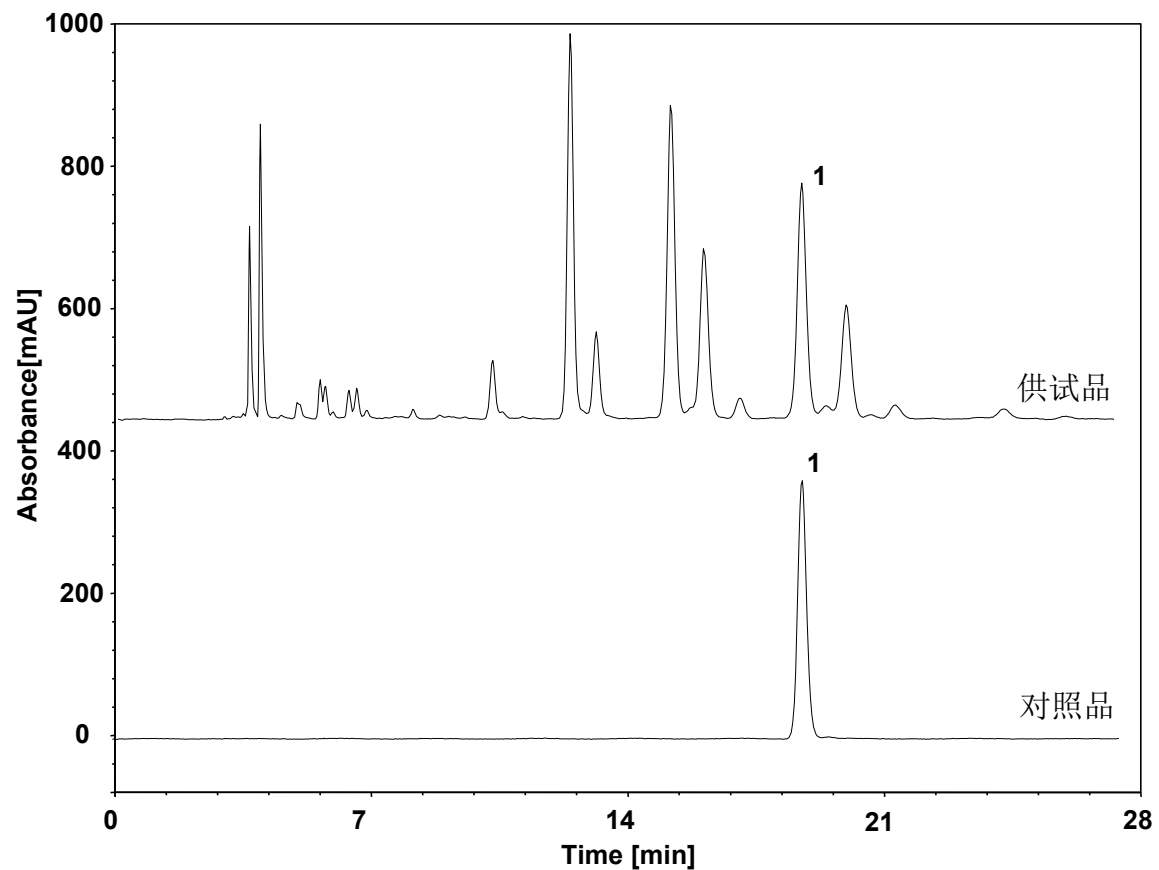


薏苡仁 (中国药典)



Column: ChromCore C18, 5 μ m
Dimension: 4.6 \times 250 mm
Mobile Phase: 65/35 v/v 乙腈/二氯甲烷
Flow Rate: 1.0 mL/min
Temperature: 30 $^{\circ}$ C
Injection: 10 μ L
Detection: 蒸发光
Sample: 薏苡仁
Peak: 1. 甘油三油酸酯