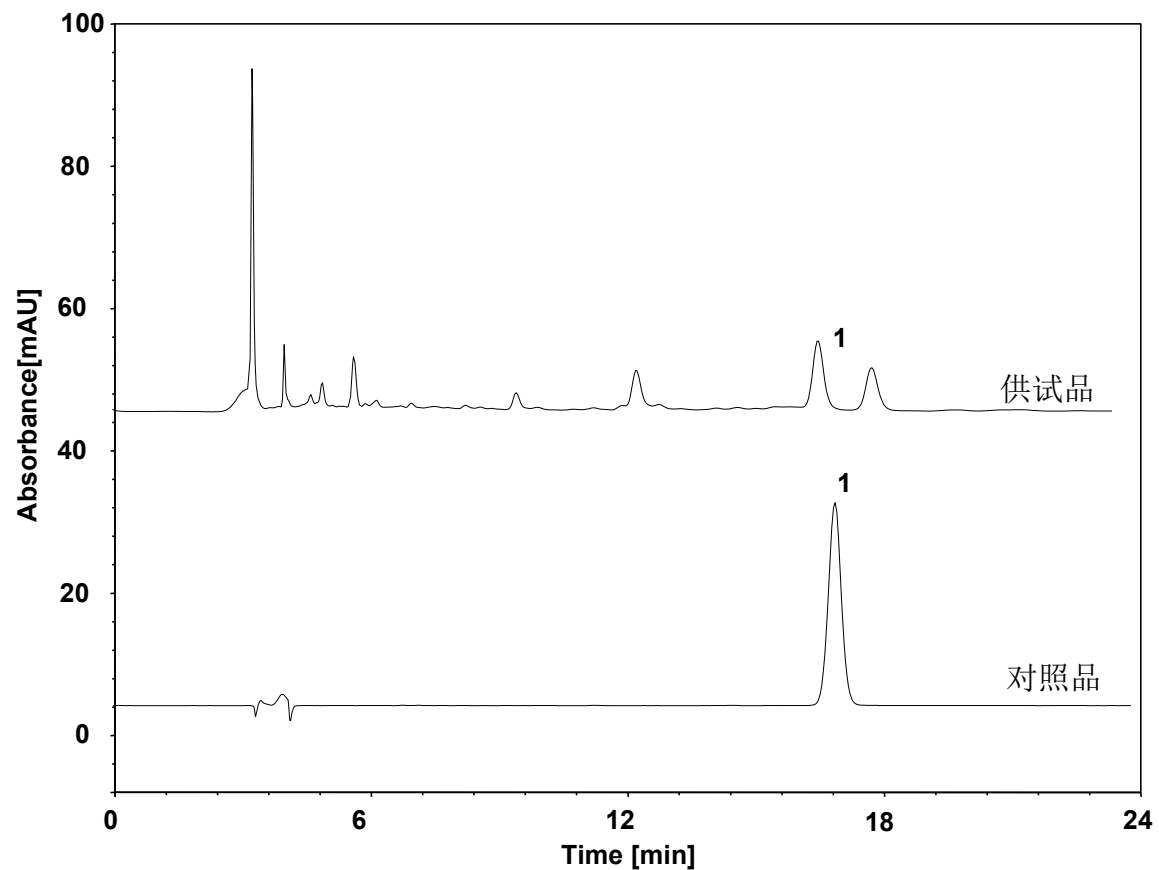


# 菟丝子 (中国药典)



Column: ChromCore C18, 5  $\mu$ m  
Dimension: 4.6  $\times$  250 mm  
Mobile Phase: 17/83 v/v 乙腈/0.1%磷酸溶液  
Flow Rate: 1.0 mL/min  
Temperature: 30  $^{\circ}$ C  
Injection: 10  $\mu$ L  
Detection: UV 360 nm  
Sample: 菟丝子  
Peak: 1. 金丝桃苷