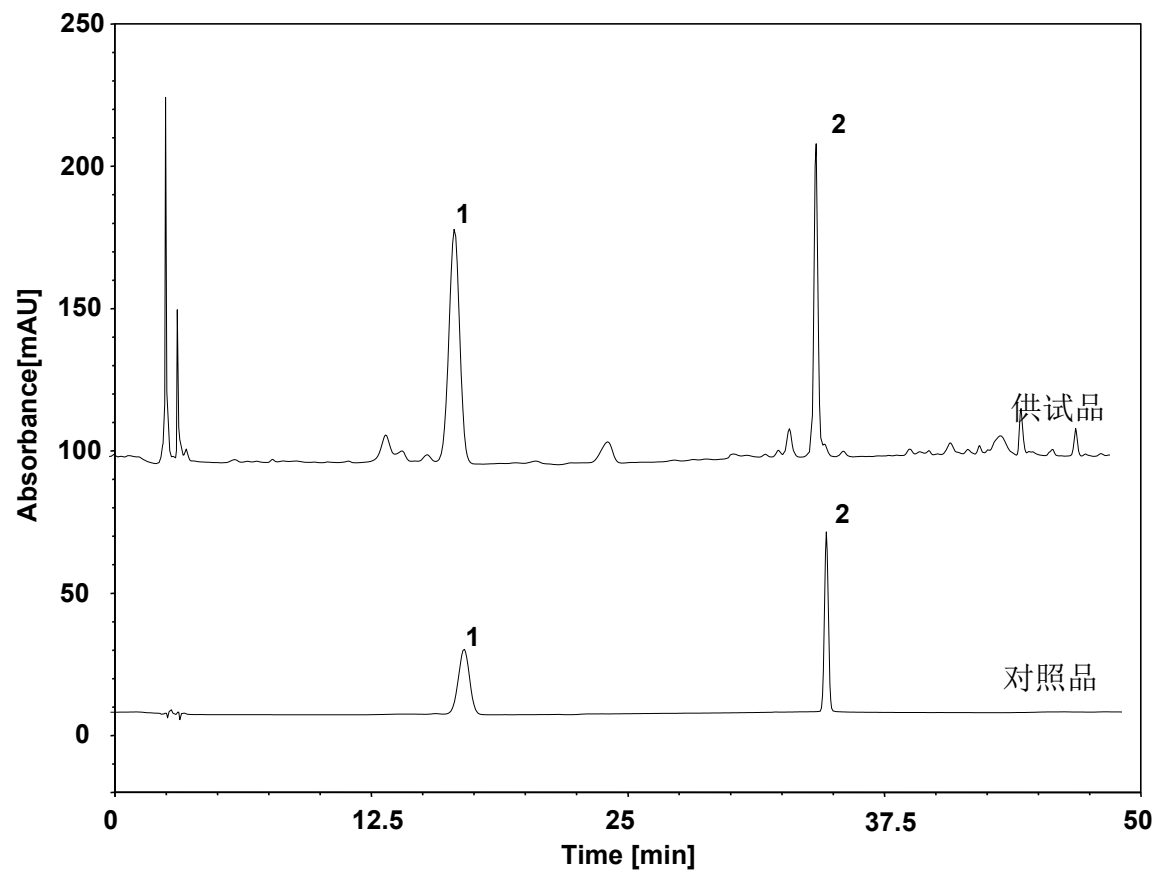


# 山茱萸 (中国药典)



Column: ChromCore C18, 5  $\mu$ m

Dimension: 4.6  $\times$  250 mm

Mobile Phase: A) 乙腈

B) 0.3%磷酸溶液

Gradient:	t (min)	%A	%B
	0	7	93
	20	7	93
	50	20	80

Flow Rate: 1.0 mL/min

Temperature: 35  $^{\circ}$ C

Injection: 10  $\mu$ L

Detection: UV 240 nm

Sample: 山茱萸

Peaks: 1. 莫诺苷

2. 马钱苷