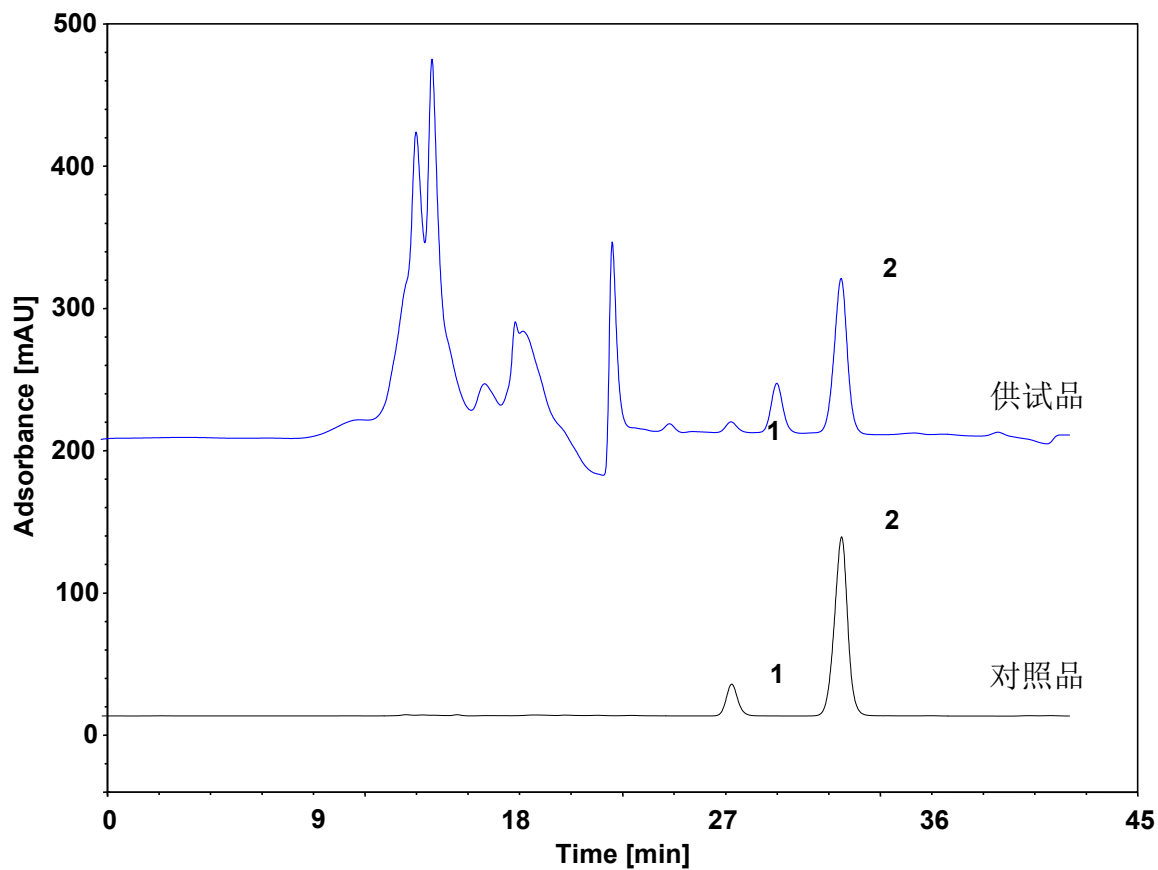
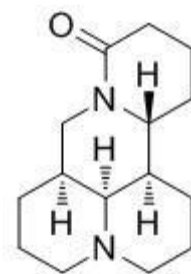


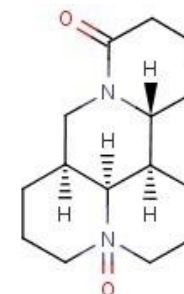
山豆根 (中国药典)



Column: ChromCore NH₂, 5 μm
Dimension: 4.6 × 250 mm
Mobile Phase: 80/5/15 v/v/v 乙腈/异丙醇/3%磷酸溶液
Flow Rate: 1.0 mL/min
Temperature: 25 °C
Injection: 20 μL
Detection: 210 nm
Peaks: 1. Matrine (苦参碱)
2. Oxymatrine (氧化苦参碱)



Matrine



Oxymatrine