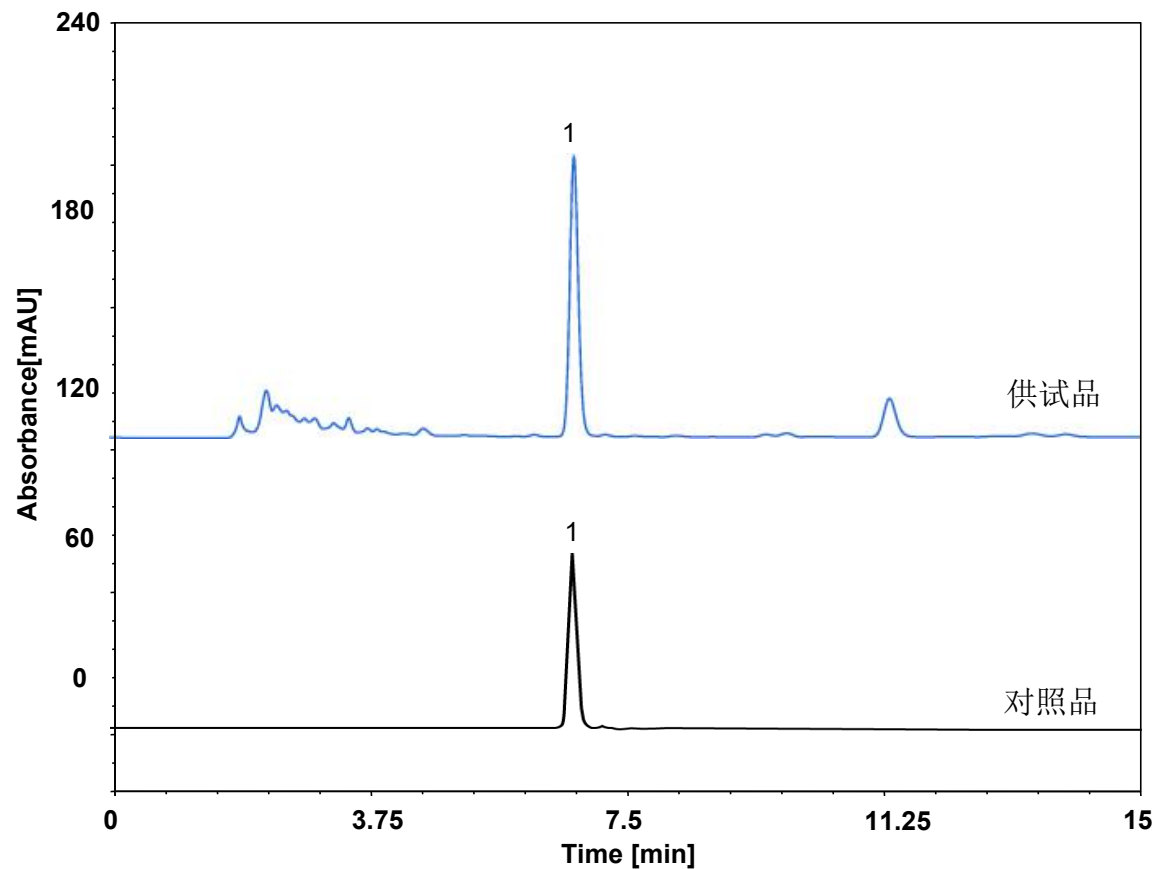


# 热炎宁片



Column: ChromCore C18, 5  $\mu$ m  
Dimension: 4.6  $\times$  250 mm  
Mobile Phase: 80/20 v/v 甲醇/水  
Flow Rate: 1.0 mL/min  
Temperature: 25  $^{\circ}$ C  
Injection: 10  $\mu$ L  
Detection: UV 287 nm  
Peak : 1. 大黄素