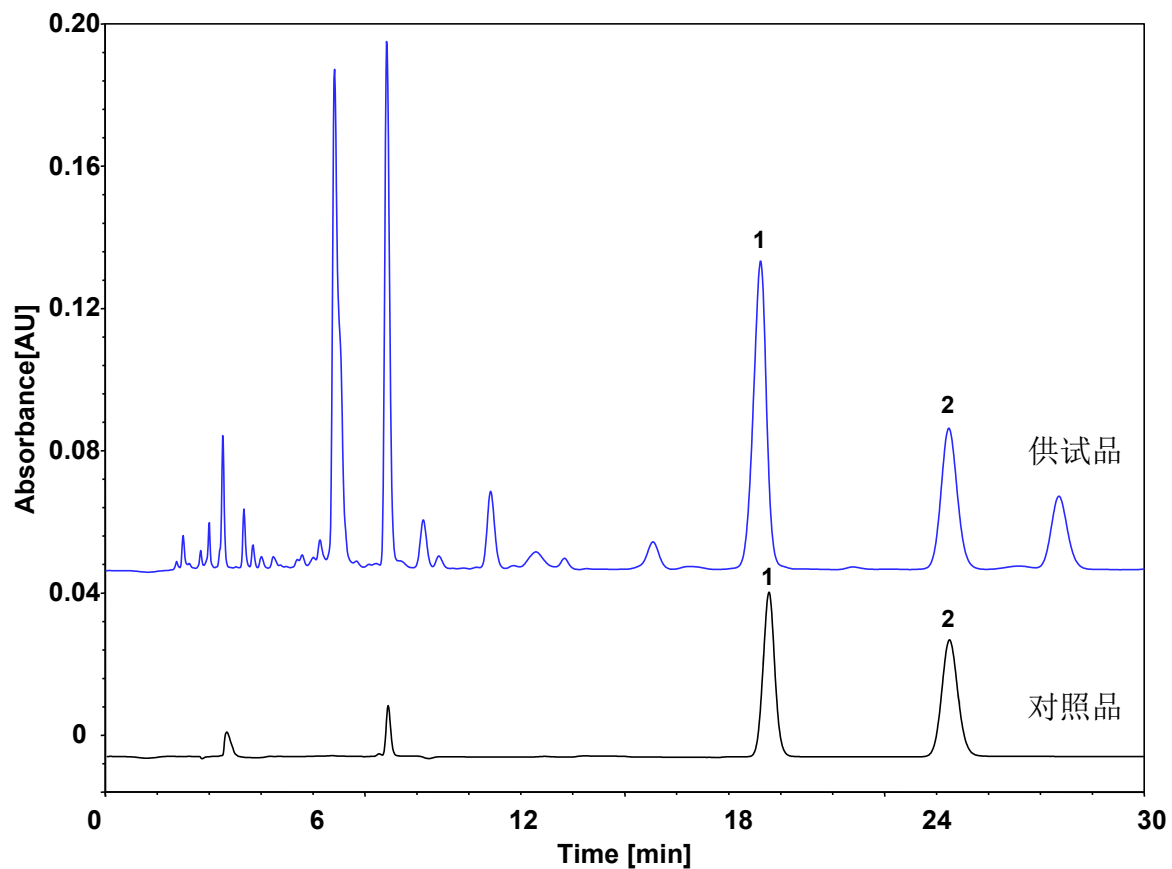


麻黄 (中国药典)



Column: ChromCore Ephedra 麻黄专用柱, 5 μ m
Dimension: 4.6 \times 250 mm
Mobile Phase: 1.5/98.5 v/v 甲醇/0.092%磷酸溶液 (含0.04%三乙胺和0.02%二正丁胺)
Flow Rate: 1.0 mL/min
Temperature: 30 $^{\circ}$ C
Injection: 10 μ L
Detection: UV 210 nm
Peaks:
1. 盐酸麻黄碱
2. 盐酸伪麻黄碱