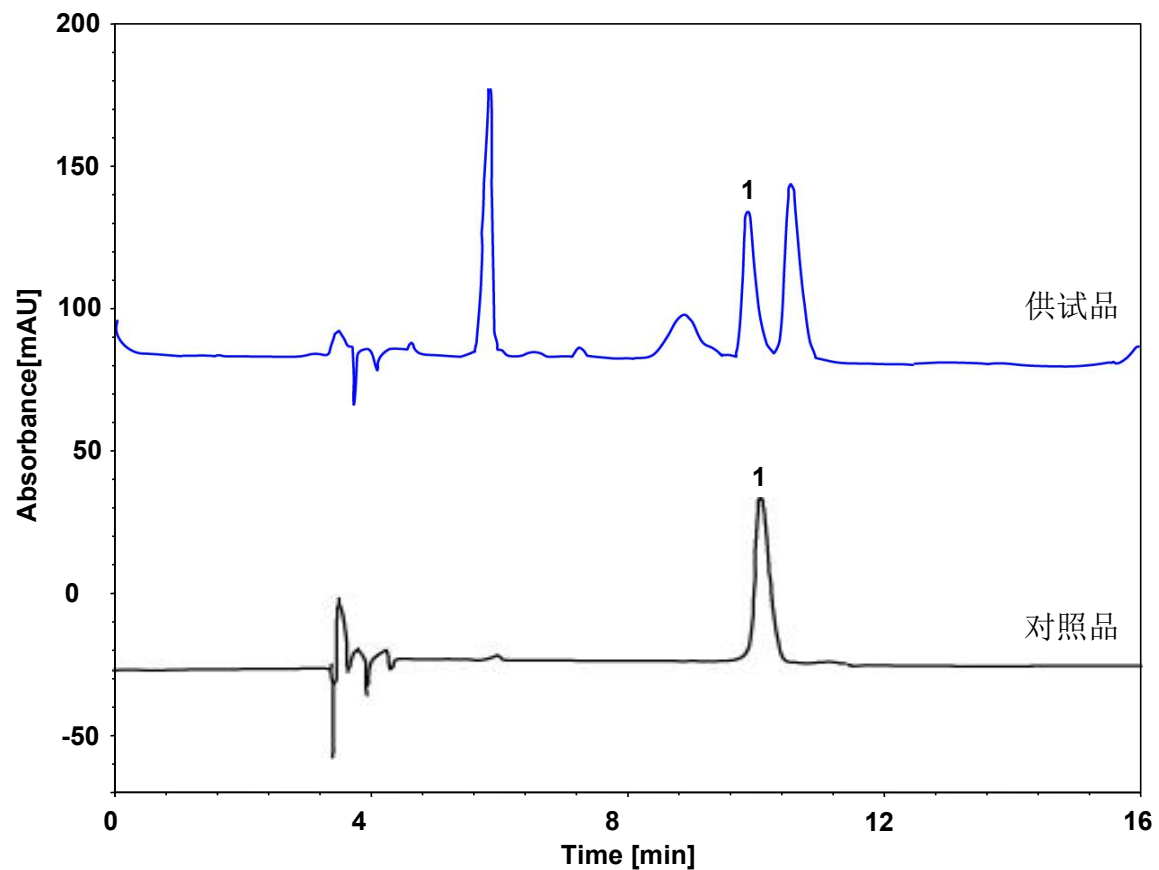


# 莱菔子 (中国药典)



Column: ChromCore Phenyl, 5  $\mu$ m  
Dimension: 4.6  $\times$  250 mm  
Mobile Phase: 15/85 v/v 乙腈/3%冰醋酸溶液  
Flow Rate: 1.0 mL/min  
Temperature: 30  $^{\circ}$ C  
Injection: 5  $\mu$ L  
Detection: UV 326 nm  
Sample: 莱菔子