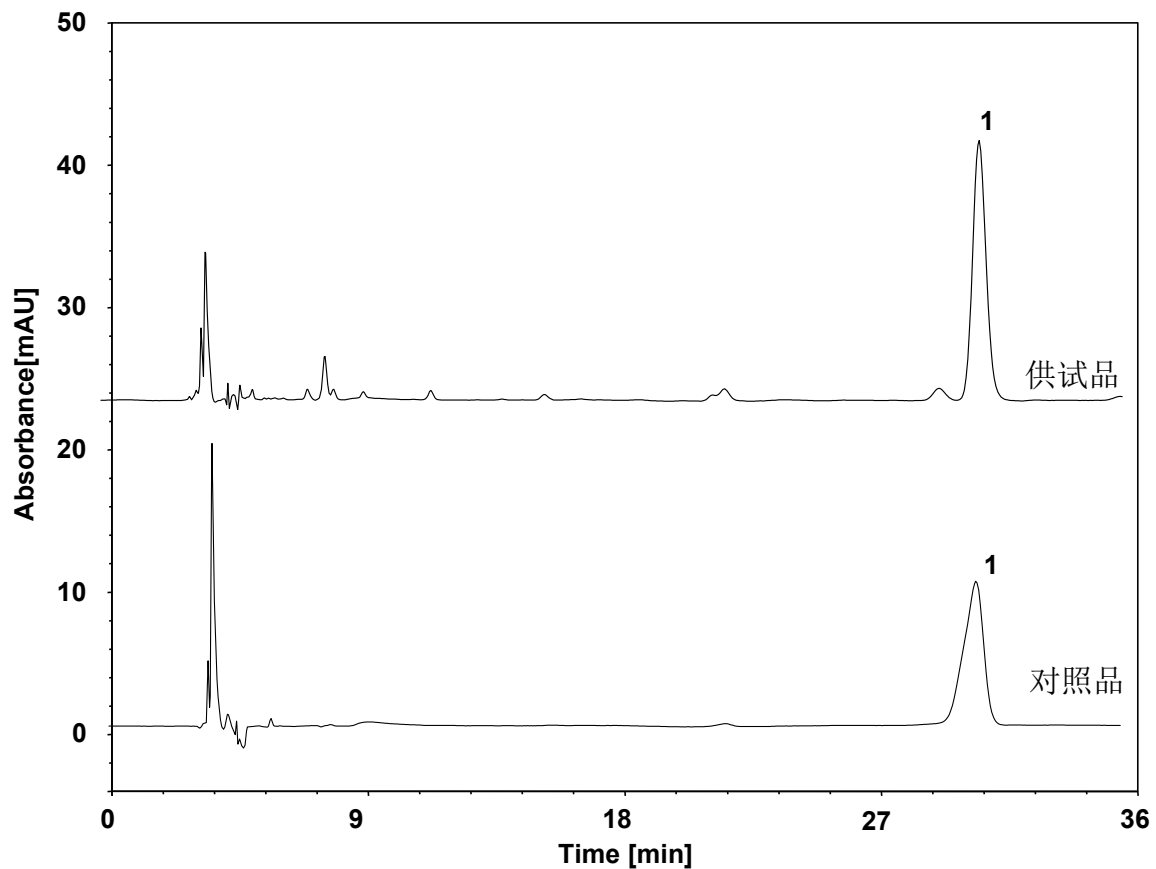


苦杏仁 (中国药典)



Column: ChromCore C18, 5 μ m
Dimension: 4.6 \times 250 mm
Mobile Phase: 8/92 v/v 乙腈/0.1%磷酸溶液
Flow Rate: 1.0 mL/min
Temperature: 30 $^{\circ}$ C
Injection: 10 μ L
Detection: UV 207 nm
Sample: 苦杏仁
Peak: 1. 苦杏仁苷