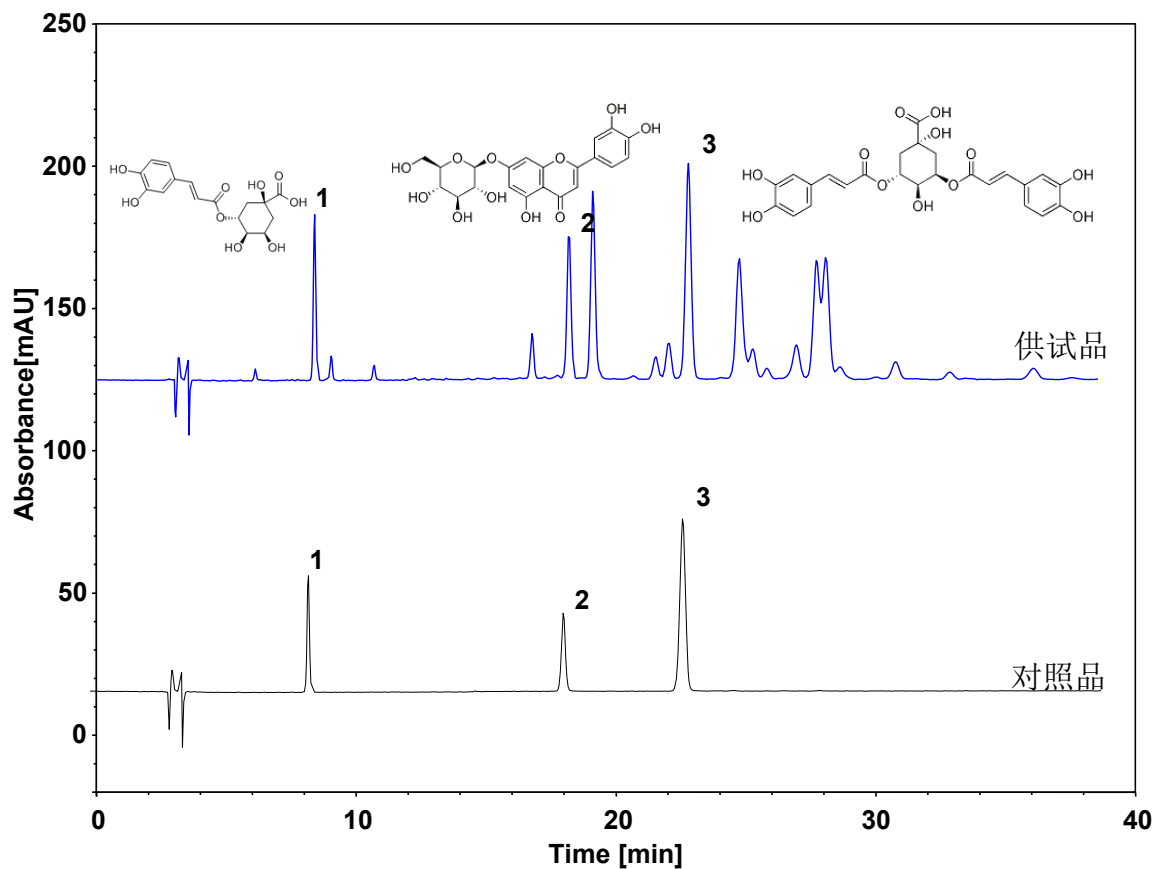


菊花 (中国药典)



Column: ChromCore C18, 5 μ m

Dimension: 4.6 \times 250 mm

Mobile Phase: A) 乙腈

B) 0.1%磷酸水溶液

Gradient:	t (min)	%A	%B
	-15	10	90
	0	10	90
	11	18	82
	30	20	80
	40	20	80

Flow Rate: 1.0 mL/min

Temperature: 30 $^{\circ}$ C

Injection: 5 μ L

Detection: UV 348 nm

Peaks:
1. Chlorogenic acid (绿原酸)
2. Luteoloside (木犀草苷)
3. 3, 5-Dicaffeoylquinic Acid (3, 5 -二咖啡酰基奎宁酸)