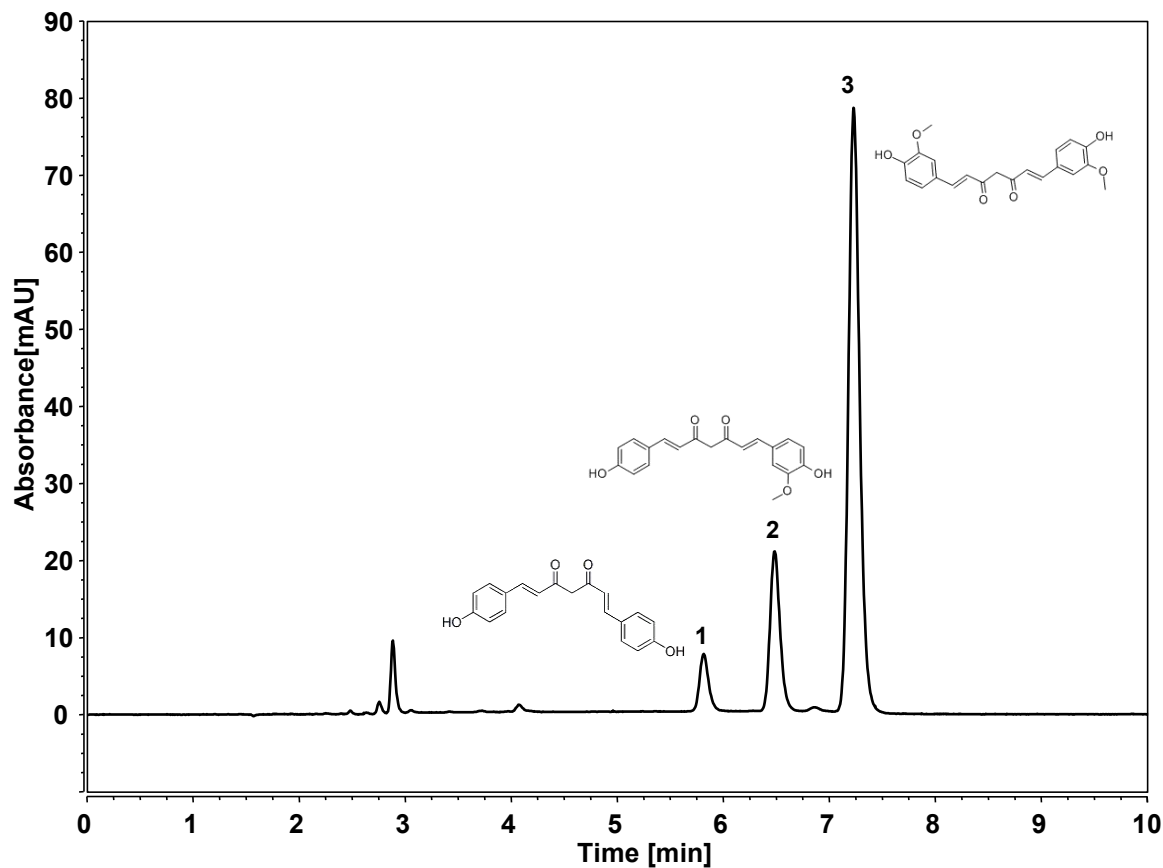


姜黄 (中国药典)



Column: ChromCore C18, 5 μ m

Dimension: 4.6 \times 150 mm

Mobile Phase: 50/50 v/v 乙腈/0.1% 甲酸水溶液

Flow Rate: 1.0 mL/min

Temperature: 30 $^{\circ}$ C

Injection: 5 μ L

Detection: UV 260 nm

Peaks:

1. Bis-demethoxycurcumin (双去甲氧基姜黄素)
2. Demethoxycurcumin (去甲氧基姜黄素)
3. Curcumin (姜黄素)