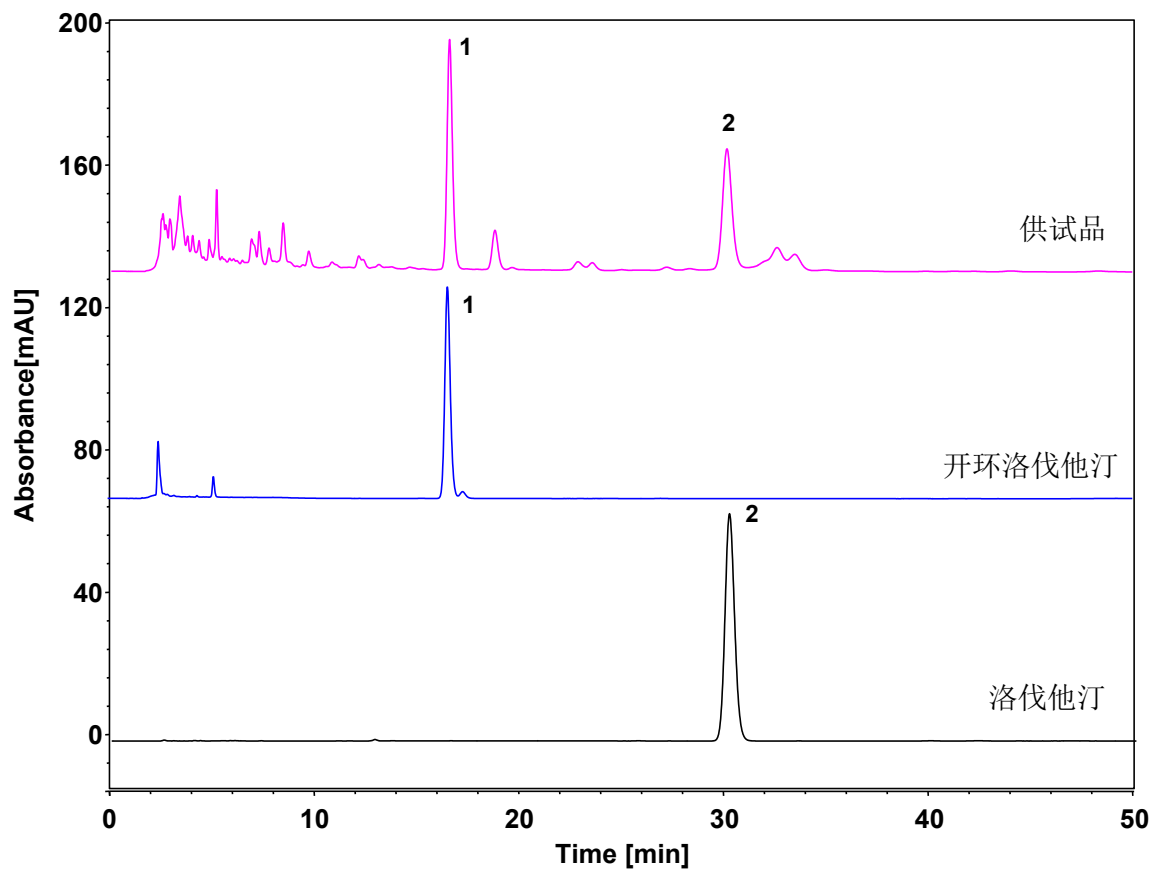
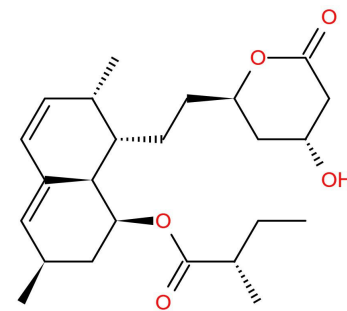


红曲



Column: ChromCore AR C18, 5 μ m
Dimension: 4.6 \times 250 mm
Mobile Phase: 50/5/45 v/v/v 乙腈/甲醇/0.1%磷酸水溶液
Flow Rate: 1.0 mL/min
Temperature: 25 $^{\circ}$ C
Injection: 10 μ L
Detection: UV 238 nm
Sample: 红曲
Peaks: 1. 开环洛伐他汀
2. 洛伐他汀



洛伐他汀