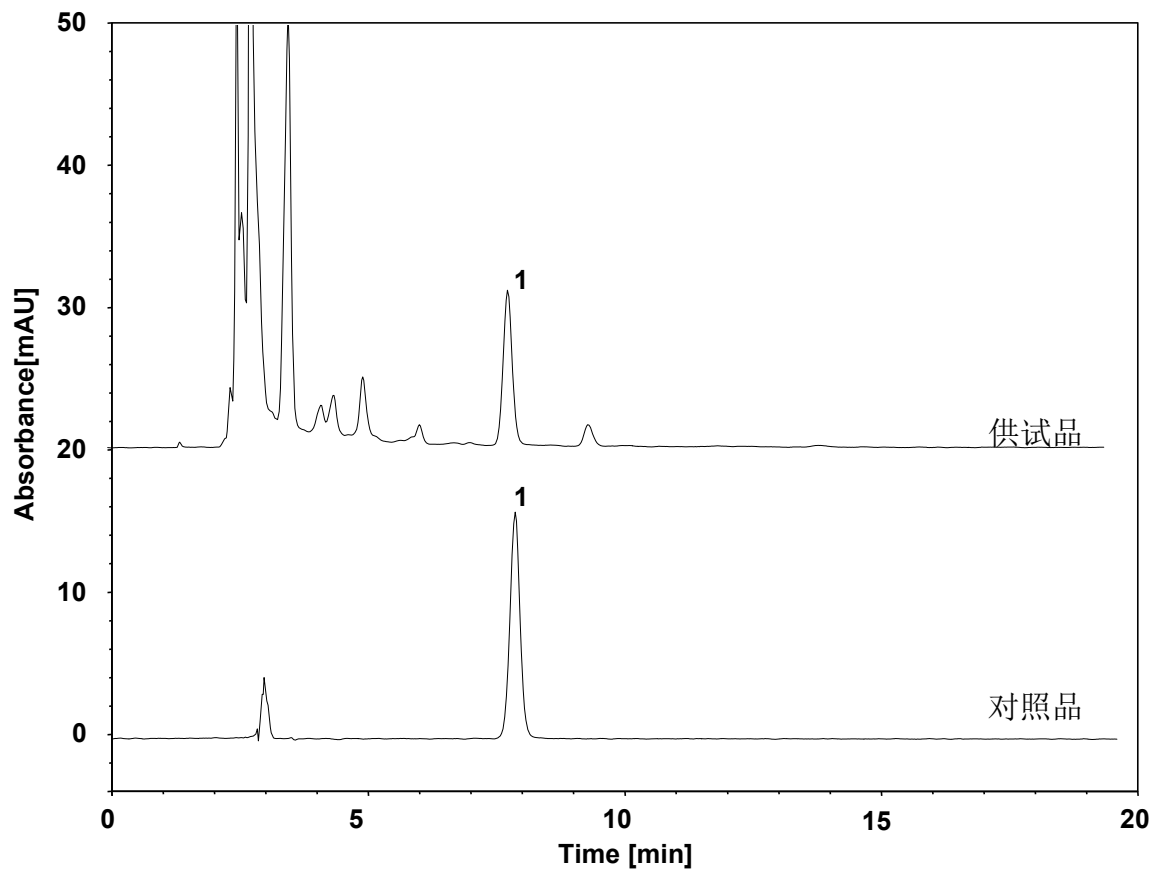


冬虫夏草 (中国药典)



Column: ChromCore C18, 5 μ m
Dimension: 4.6 \times 250 mm
Mobile Phase: 15/85 v/v 甲醇/磷酸盐缓冲溶液, pH6.5
Flow Rate: 1.0 mL/min
Temperature: 30 $^{\circ}$ C
Injection: 5 μ L
Detection: UV 260 nm
Sample: 冬虫夏草
Peak: 1. 腺苷