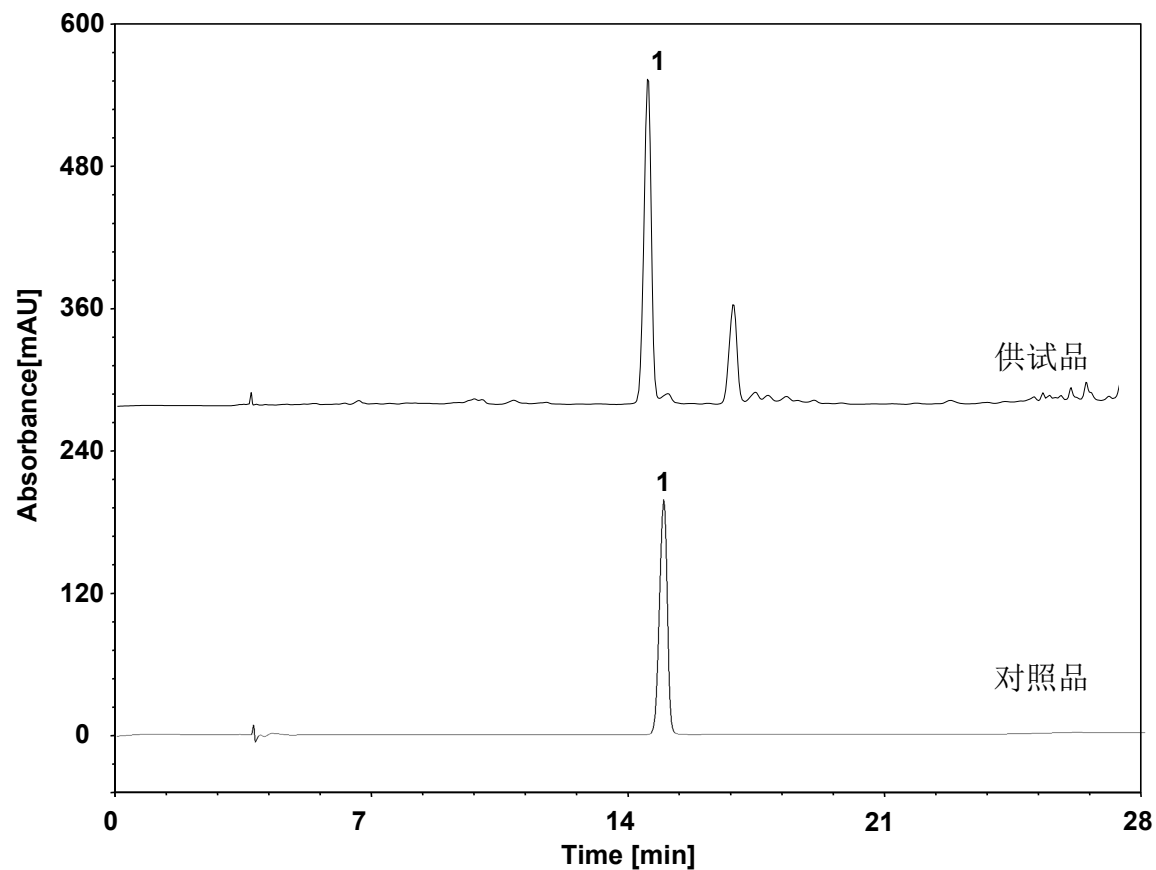


沉香-沉香四醇 (中国药典)



Column: ChromCore C18, 5 μ m
Dimension: 4.6 \times 250 mm
Mobile Phase: A) 乙腈
B) 0.1% 甲酸溶液
Gradient:

t (min)	%A	%B
0	15	85
10	20	80
19	23	77
21	33	67
25	33	67
25.1	95	5
35	95	5

Flow Rate: 1.0 mL/min
Temperature: 30 $^{\circ}$ C
Injection: 10 μ L
Detection: UV 252 nm
Sample: 沉香
Peak: 1. 沉香四醇