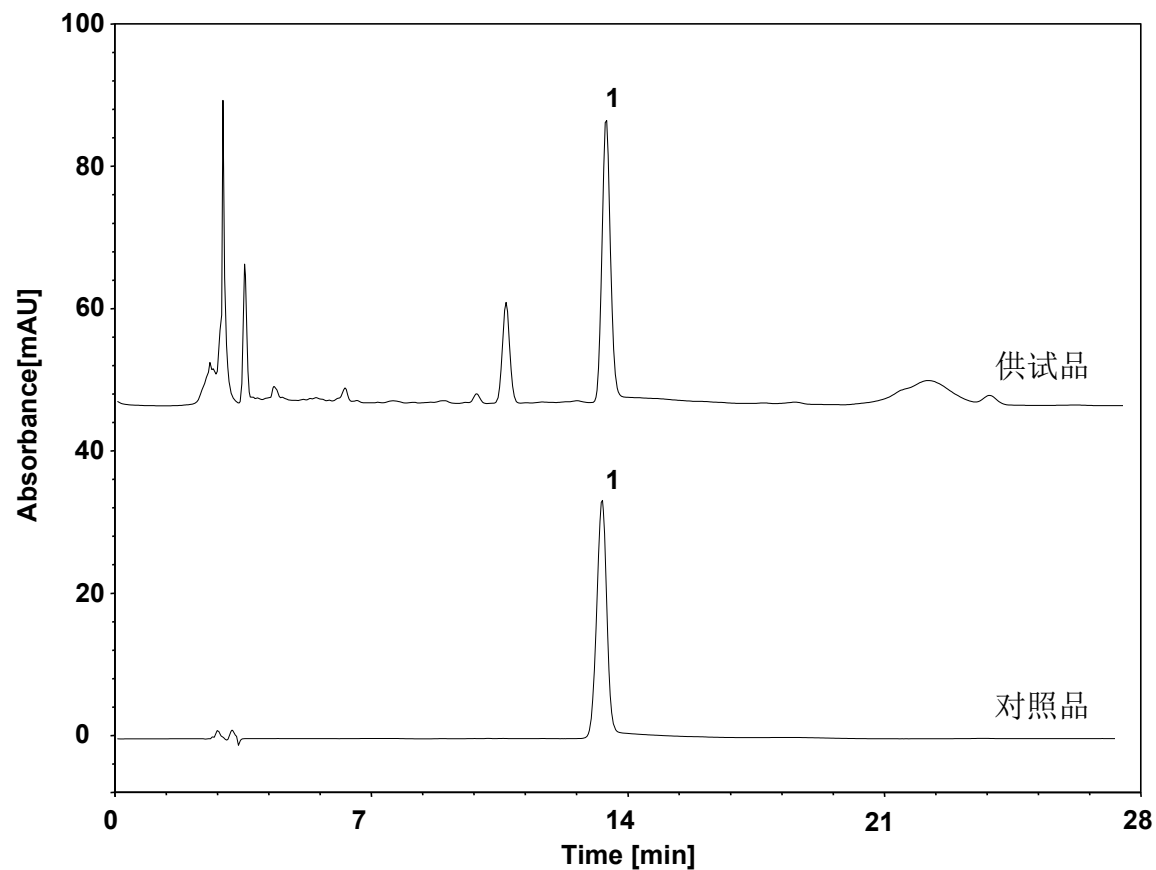


炒白芍-芍药苷 (中国药典)



Column: ChromCore C18, 5 μ m
Dimension: 4.6 \times 250 mm
Mobile Phase: 14/86 v/v 乙腈/0.1%磷酸水
Flow Rate: 1.0 mL/min
Temperature: 25 $^{\circ}$ C
Injection: 10 μ L
Detection: UV 230 nm
Sample: 白芍
Peak: 1. 芍药苷