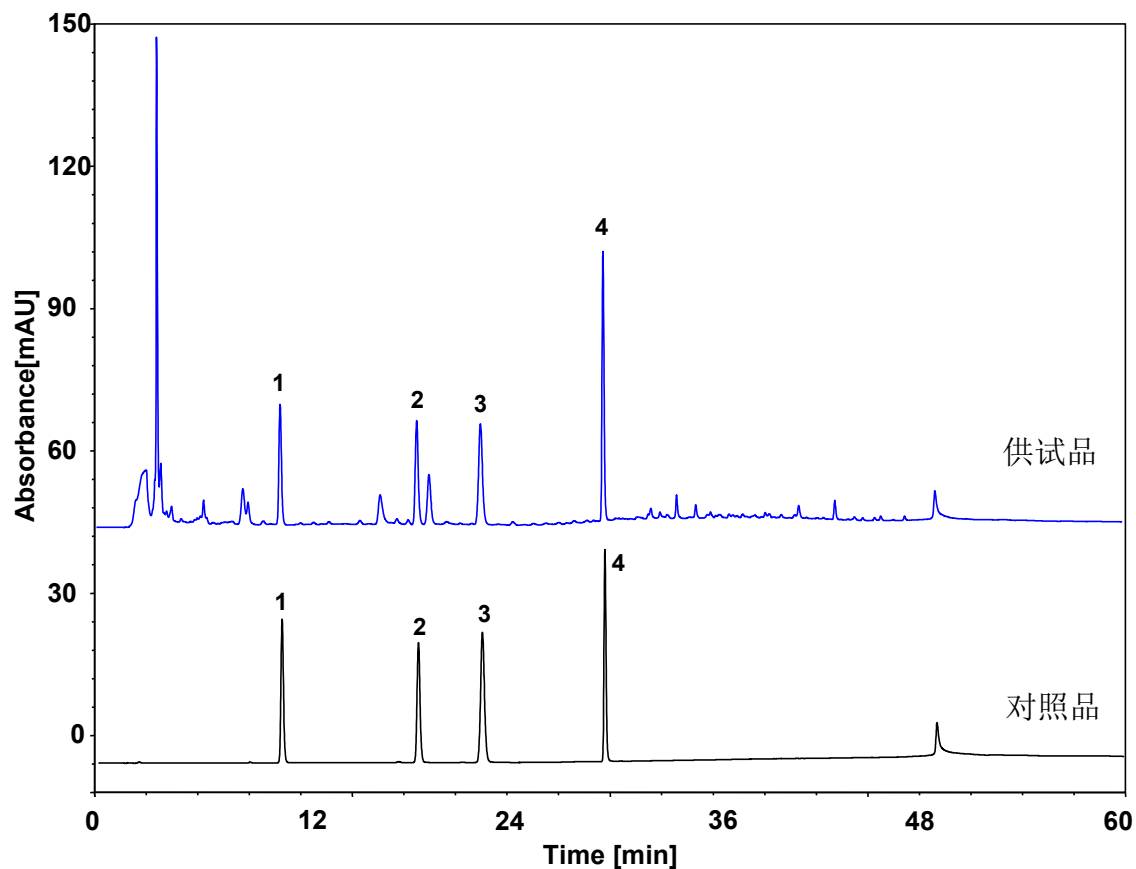


板蓝根颗粒 (中国药典)



Column: ChromCore C18, 5 μ m

Dimension: 4.6 \times 250 mm

Mobile Phase: A) 甲醇

B) 水

Gradient:	t (min)	%A	%B
	0	3	97
	3	3	97
	20	10	90
	40	70	30
	50	70	30
	51	3	97

Flow Rate: 0.8 mL/min

Temperature: 30 $^{\circ}$ C

Injection: 5 μ L

Detection: UV 254 nm

Sample: 板蓝根颗粒

Peaks:

1. 尿苷
2. 鸟苷
3. (R, S)-告依春
4. 腺苷