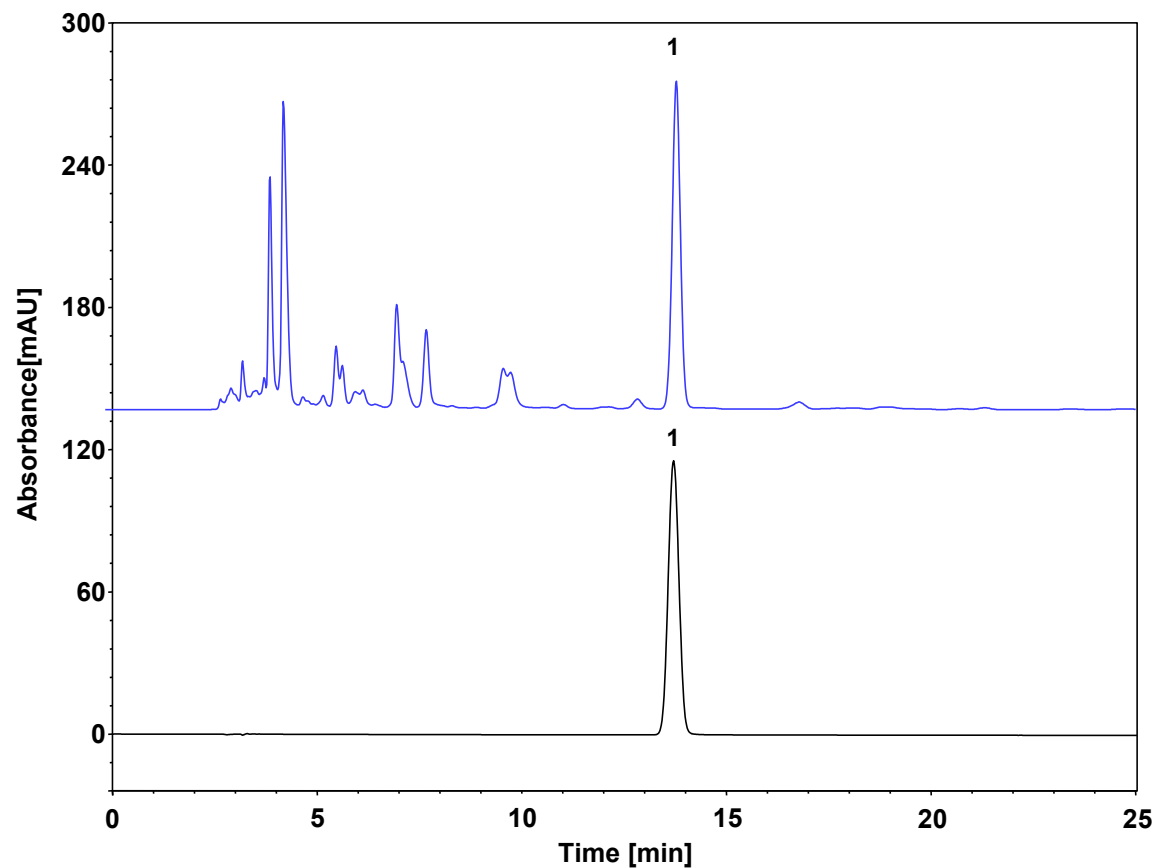


板蓝根 (中国药典2020)



Column: ChromCore C18, 5 μ m
Dimension: 4.6 \times 250 mm
Mobile Phase: 7/93 v/v 甲醇/0.02%磷酸水
Flow Rate: 1.0 mL/min
Temperature: 25 $^{\circ}$ C
Injection: 10 μ L
Detection: UV 245 nm
Sample: 板蓝根
Peak: 1. (R, S)-告依春