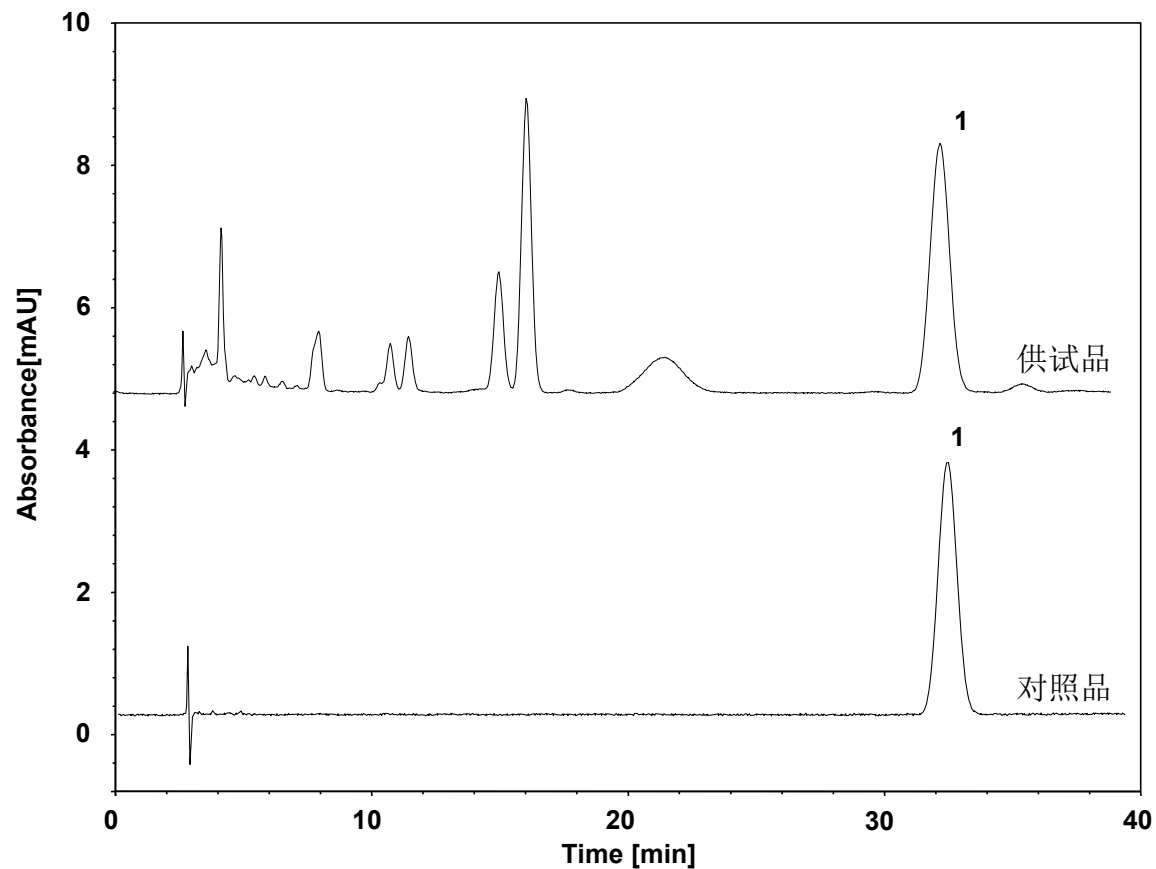


白芷 (中国药典)



Column: ChromCore C18, 5 μ m
Dimension: 4.6 \times 250 mm
Mobile Phase: 55/45 v/v 甲醇/水
Flow Rate: 1.0 mL/min
Temperature: 30 $^{\circ}$ C
Injection: 5 μ L
Detection: UV 300 nm
Sample: 白芷
Peak: 1. 欧前胡素