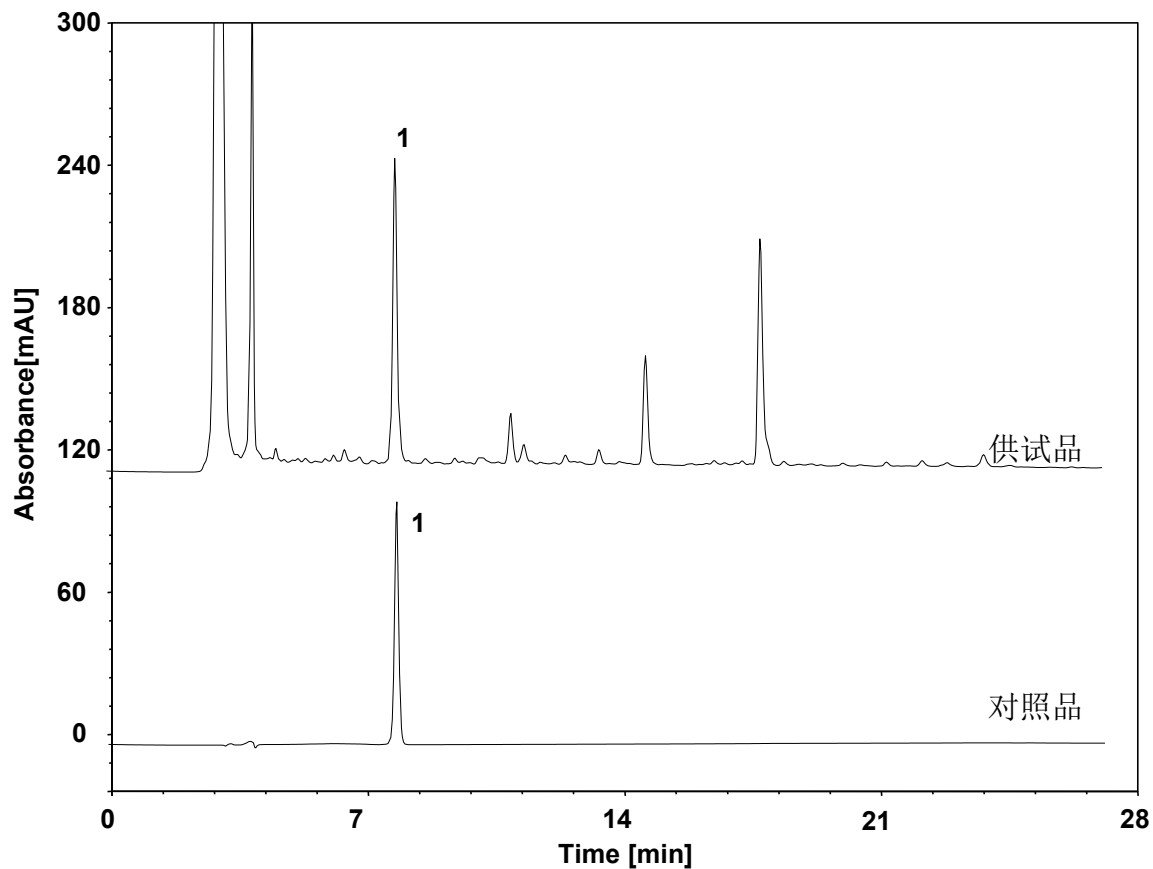


黄芪 (中国药典)



Column: ChromCore C18, 5 μ m
Dimension: 4.6 \times 250 mm
Mobile Phase: A) 乙腈
B) 0.2% 甲酸溶液
Gradient:

t (min)	%A	%B
0	20	80
20	40	60
30	40	60

Flow Rate: 1.0 mL/min
Temperature: 30 $^{\circ}$ C
Injection: 10 μ L
Detection: UV 260 nm
Sample: 黄芪
Peak: 1. 毛蕊异黄酮葡萄糖苷