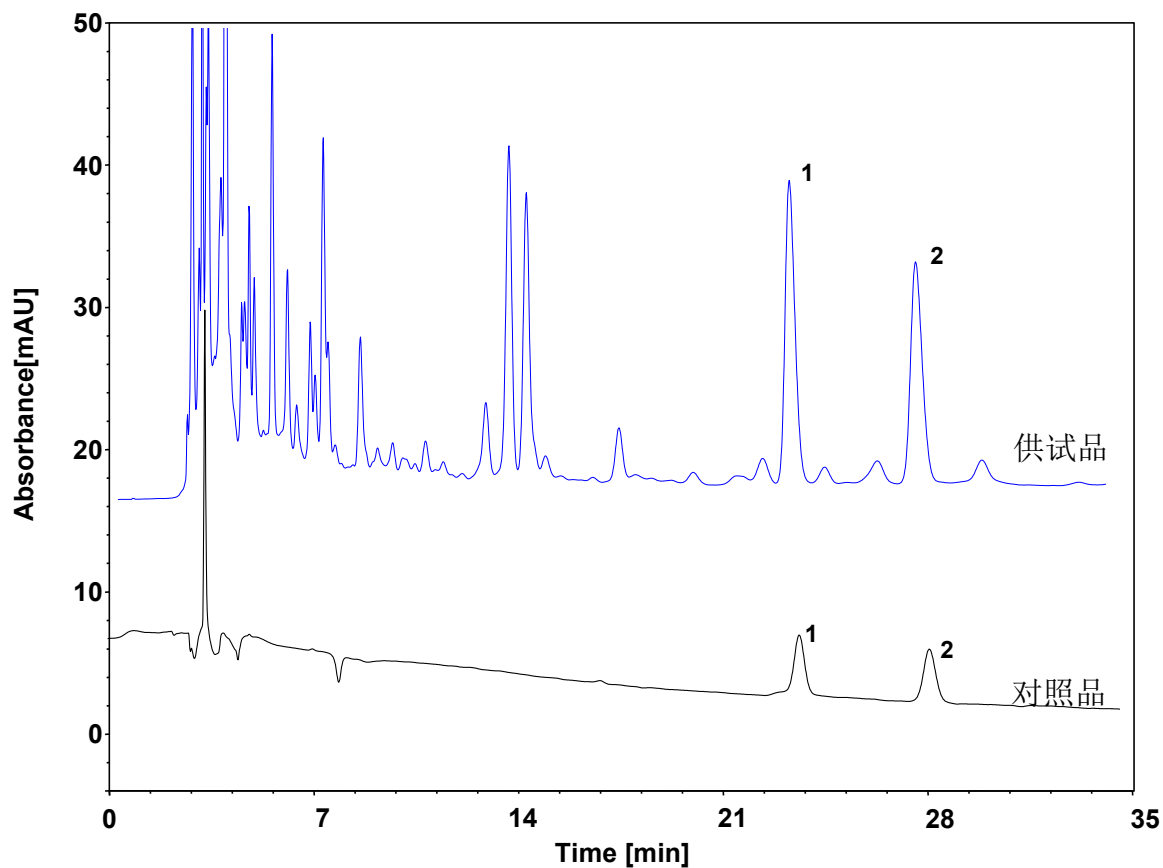


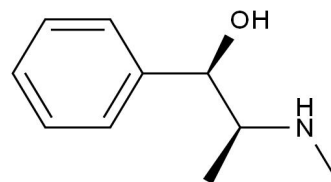
未知中药制剂中麻黄碱与伪麻黄碱



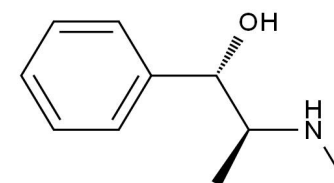
Column: ChromCore C18, 5 μ m
Dimension: 4.6 \times 250 mm
Mobile Phase: A) 0.1%磷酸水溶液 (含0.1%三乙胺)
B) 乙腈

Gradient:	t (min)	%A	%B
	0	98.8	1.2
	40	98.8	1.2
	41	65	35
	70	65	35

Flow Rate: 1.0 mL/min
Temperature: 30 $^{\circ}$ C
Injection: 10 μ L
Detection: UV 210 nm
Sample: 未知中药制剂
Peaks: 1. 麻黄碱
2. 伪麻黄碱



麻黄碱



伪麻黄碱