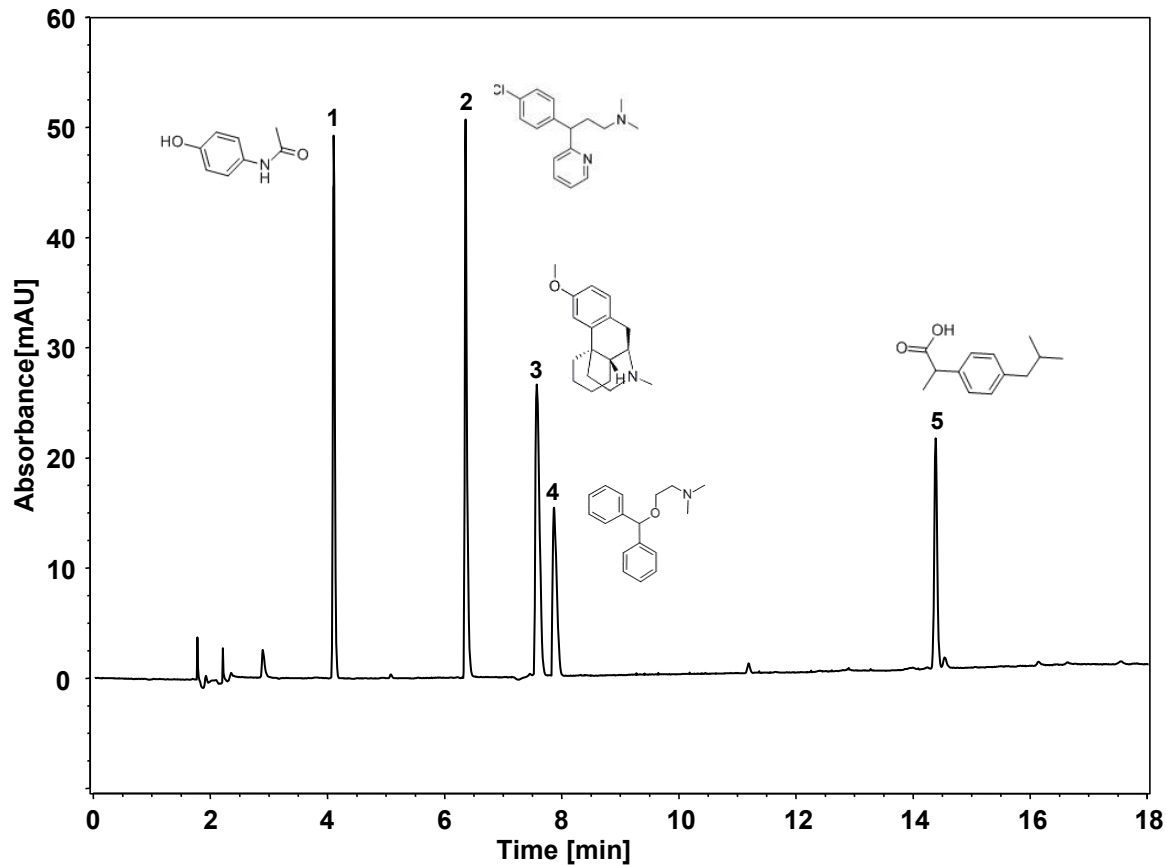


复方感冒药



Column: ChromCore 120 C18, 3 μ m

Dimension: 4.6 \times 150 mm

Mobile Phase: A) 0.1% 甲酸乙腈
B) 0.1% 甲酸水溶液

Gradient:	t (min)	%A	%B
	-5	5	95
	0	5	95
	15	80	20
	18	80	20

Flow Rate: 1.0 mL/min

Temperature: 30 $^{\circ}$ C

Injection: 5 μ L

Detection: UV 265 nm

Peaks:

1. Acetaminophen (对乙酰氨基酚)
2. Chlorpheniramine (扑尔敏)
3. Dextromethorphan (右美沙芬)
4. Diphenhydramine (苯海拉明)
5. Ibuprofen (布洛芬)