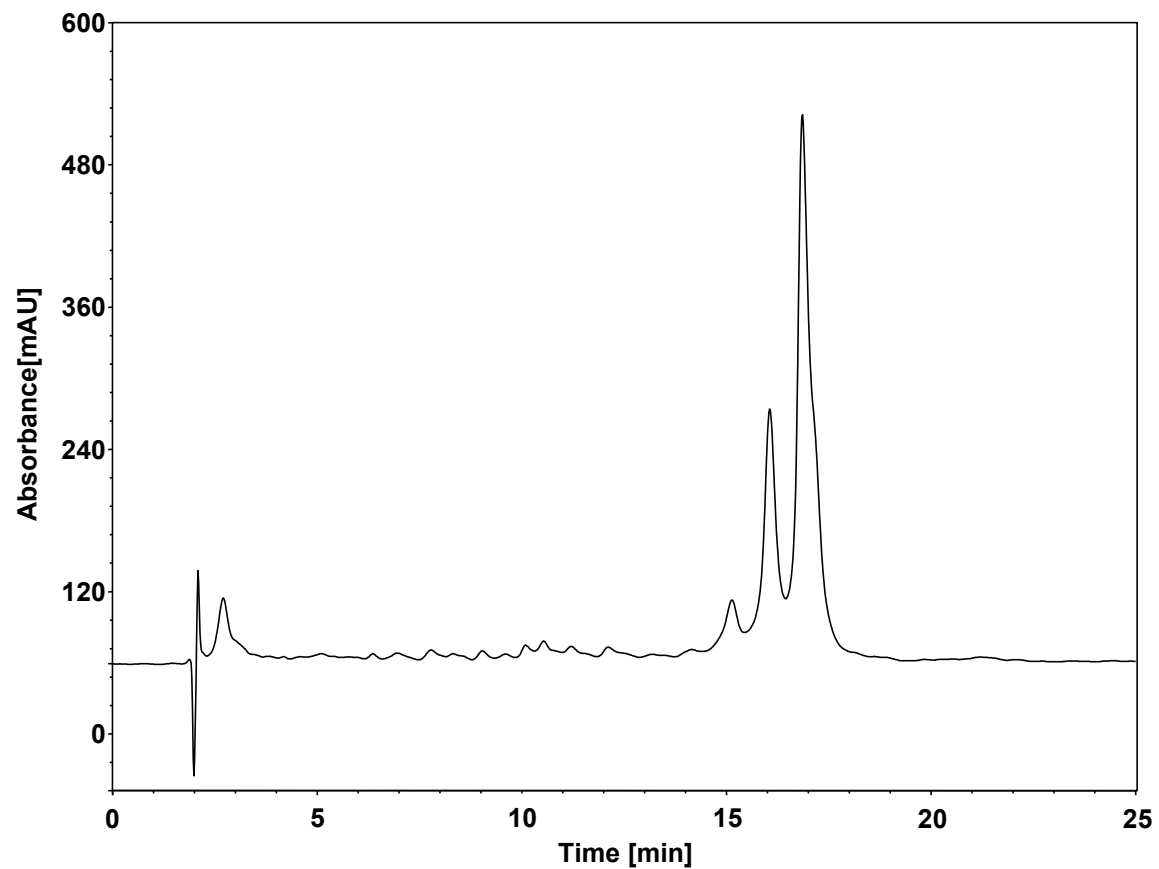


# 酪蛋白



Column: ChromCore 300 C4-T, 5  $\mu$ m  
Dimension: 4.6  $\times$  150 mm  
Mobile Phase: A) 0.1% 三氟乙酸水  
B) 0.1% 三氟乙酸乙腈

Gradient:	t (min)	%A	%B
	0	67	33
	25	58	42
	25.1	67	33
	40	67	33

Flow Rate: 1.0 mL/min  
Temperature: 45  $^{\circ}$ C  
Injection: 10  $\mu$ L  
Detection: UV 214 nm  
Sample: A1与A2酪蛋白