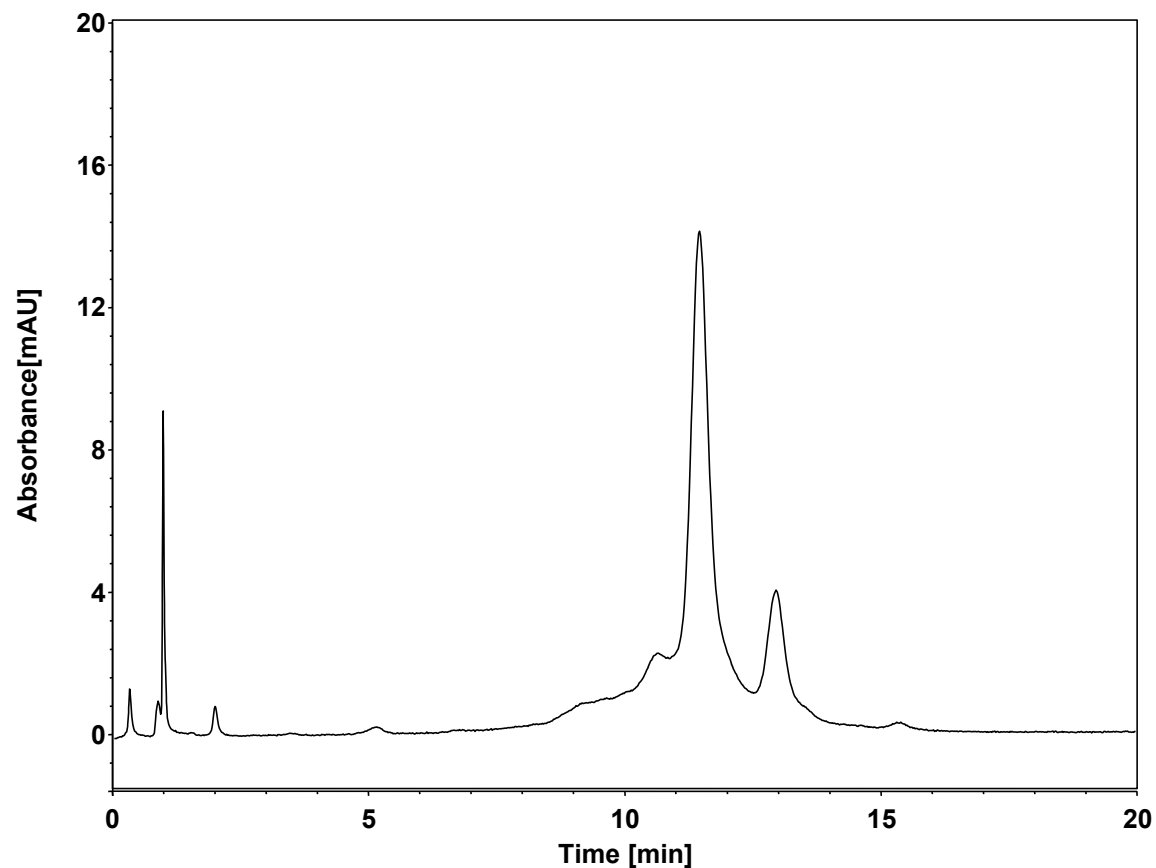


利妥昔-离子交换 (SCX)



Column: BioCore SCX, 10 μ m
Dimension: 4.6 \times 150 mm
Mobile Phase: A) 20 mM MES, pH6.5
B) 300 mM NaCl in 20 mM MES, pH6.5
Gradient:

t (min)	%A	%B
-15	80	20
0	80	20
20	65	35
20.1	0	100
23	0	100

Flow Rate: 1.0 mL/min
Temperature: 30 $^{\circ}$ C
Injection: 10 μ L
Detection: UV 280 nm
Sample: Rituximab (1.0 mg/mL in H₂O)