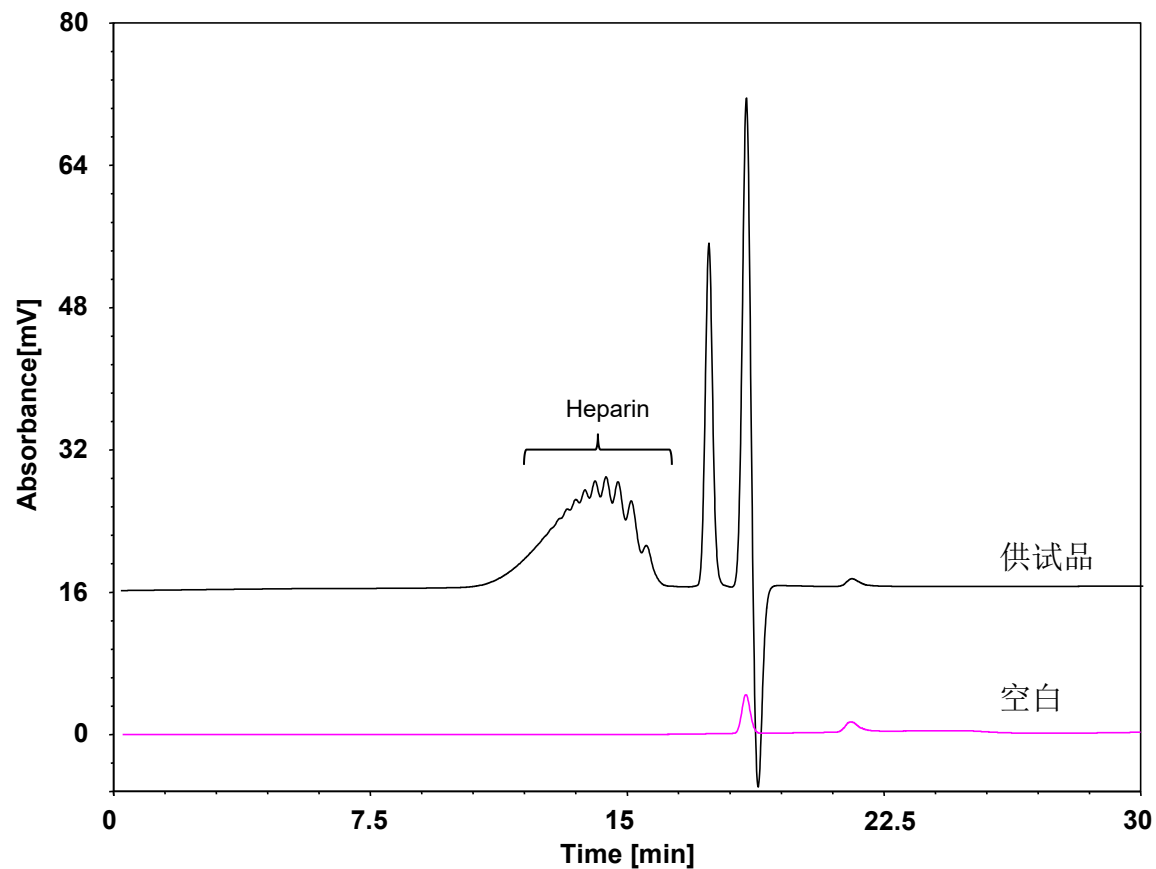


低分子肝素



Column: BioCore SEC-120, 5 μ m
Dimension: 7.8 \times 300 mm
Mobile Phase: 100 mM醋酸铵
Flow Rate: 0.6 mL/min
Temperature: 35 $^{\circ}$ C
Injection: 20 μ L
Detection: 示差
Sample: 低分子肝素